

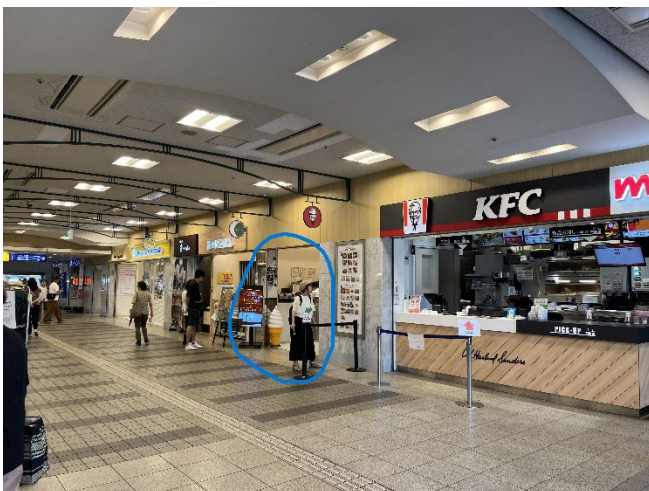
Getting to the Kokura Satellite Campus, the University of Kitakyushu

(I) Between 9 am and 10 am (The following entrance of AMU Plaza opens at 9 am)

1. Go to the first floor of the AMU Plaza shopping center near the South Gate of Kokura Station
2. Find Kentucky Fried Chicken (KFC)
3. Enter this gate next to the Kentucky Fried Chicken



4. Enter the marked entrance and proceed to the elevator hall



5. Take an elevator and go to the 7th floor



6. Get off the elevator and turn right, then you will find our Satellite Campus



(II) After 10 am

You can use other entrances of the AMU Plaza shopping center, as well.